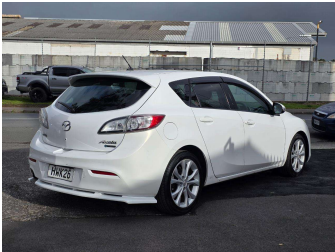
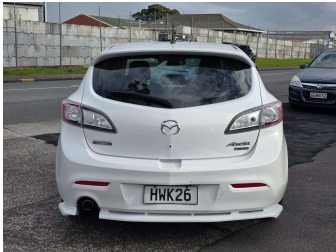


2009 Mazda AXELA 2.0P/2 SMART KEYS



Purchase Price

Includes GST, Registration & Licensing

\$5,990

Finance may be available on this vehicle. Ask one of our friendly staff for more information.



Gain peace of mind with Mechanical Breakdown Insurance. **Ask us how.**



Top features

- » 4 cylinder
- » ABS
- » Air Conditioning
- » All Power Windows
- » Alloy Wheel
- » Central locking
- » Central Locking
- » Chain Driven Engine
- » Driver airbag
- » Passenger airbag

Body Style

Hatchback

Odometer

225,994 km

Engine

1990 cc

Fuel Type

Petrol

Transmission

Automatic

Wheels

17"

VIN

7AT0C13JX14100655

Interior

-

Safety



Based on 2024 UCSR rating for 09-13 models

Reg No.

HWK26

Ext Colour

White

History

Ex-Overseas

Seats

Cloth

CO2 Emissions

★★★★☆

183 grams/km

Energy Economy

★★☆☆☆

**Annual fuel cost of \$2,980
7.6L per 100km**

Cost per year is an estimate based on petrol price of \$2.80 per litre and an average distance of 14000 km. Emissions and Energy Economy figures standardised to 3P WLTP.

Stock ID: 7028



Central Autos Ltd | Phone 09 215 7677 | Email centralautosltd@gmail.com
45 Leonard Road, Penrose, Auckland 1060, New Zealand
www.cas98.com