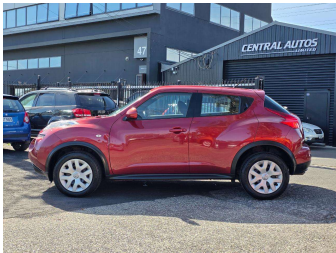


# 2012 Nissan JUKE 1.6p/Push start/Ready2Go



Purchase Price

**\$5,990**

Includes GST, Registration & Licensing

Finance may be available on this vehicle. Ask one of our friendly staff for more information.



Gain peace of mind with Mechanical Breakdown Insurance. **Ask us how.**



**Top features**

- » 4 cylinder
- » ABS
- » ABS Braking
- » Air Conditioning
- » All Power Windows
- » Alloy Wheel
- » Central locking
- » Central Locking
- » Chain Driven Engine
- » Cruise Control
- » Driver airbag
- » Passenger airbag
- » Power steering

Body Style

**5 door, Hatchback**

Odometer

**173,856 km**

Engine

**1598 cc**

Fuel Type

**Petrol**

Transmission

**Automatic, Front Wheel**

Wheels

-

VIN

**SJNFBAF15A6148907**

Interior

-

Safety



Based on 2024 UCSR rating for 13-19 models

Reg No.

**GEY763**

Ext Colour

**Red**

History

**NZ New**

Seats

**5 seats, Cloth**

CO2 Emissions

★★★★★☆☆

**168 grams/km**

Energy Economy

★★★☆☆☆☆

**Annual fuel cost of \$2,740  
7L per 100km**

Cost per year is an estimate based on petrol price of \$2.80 per litre and an average distance of 14000 km. Emissions and Energy Economy figures standardised to 3P WLTP.

**Stock ID: 7224**



Central Autos Ltd | Phone 09 215 7677 | Email [centralautosltd@gmail.com](mailto:centralautosltd@gmail.com)  
45 Leonard Road, Penrose, Auckland 1060, New Zealand  
[www.cas98.com](http://www.cas98.com)