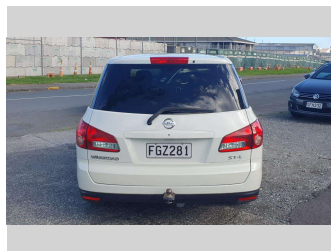
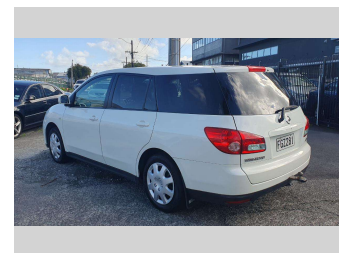
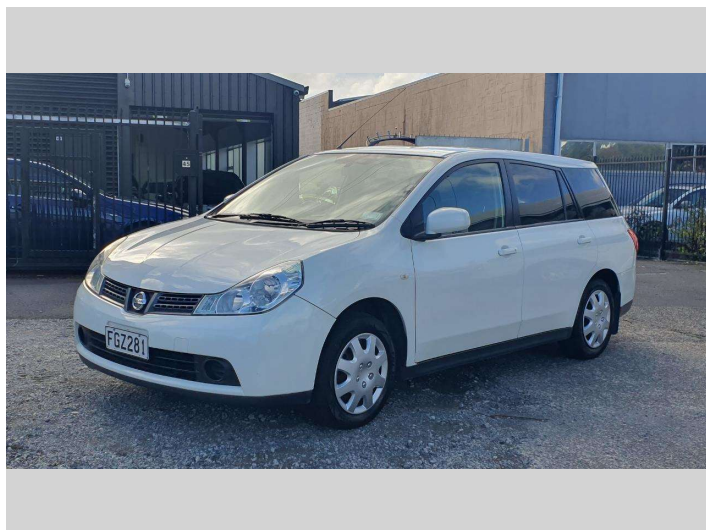



2010 Nissan Wingroad 1.8P/NZ NEW/PADDLE SHIFT




Purchase Price **\$6,490**
Includes GST, Registration & Licensing

Finance may be available on this vehicle. Ask one of our friendly staff for more information.



Gain peace of mind with Mechanical Breakdown Insurance. **Ask us how.**



Top features

- » 4 cylinder
- » ABS Braking
- » Air Conditioning
- » All Power Windows
- » Central locking
- » Central Locking
- » Chain Driven Engine
- » Driver airbag
- » Electric Mirrors (Retr...
- » Passenger airbag
- » Power steering
- » Towbar

Body Style
5 door, Station Wagon

Odometer
147,998 km

Engine
1797 cc

Fuel Type
Petrol

Transmission
Automatic, Front Wheel

Wheels
-

VIN
JN1TBAY12A0029272

Interior
-

Safety



Based on 2023 VSRR rating

Reg No.
FGZ281

Ext Colour
White

History
NZ New

Seats
5 seats, Cloth

CO2 Emissions
★★★★☆
179 grams/km

Energy Economy
★★☆☆☆

Annual fuel cost of \$2,940
7.5L per 100km

Cost per year is an estimate based on petrol price of \$2.80 per litre and an average distance of 14000 km. Emissions and Energy Economy figures standardised to 3P WLTP.

Stock ID: 6206



Central Auto Services | Phone 09 215 7677 | Email centralautoservices98@gmail.com
45 Leonard Road, Penrose, Auckland 1060, New Zealand
www.cas98.com