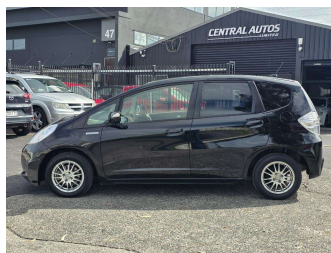


# 2013 Honda FIT Hybrid/Cruise Control/




**Purchase Price** **\$7,990**  
Includes GST, Registration & Licensing

Finance may be available on this vehicle. Ask one of our friendly staff for more information.



Gain peace of mind with Mechanical Breakdown Insurance. **Ask us how.**



**Top features**

- » 4 cylinder
- » ABS
- » Air Conditioning
- » Alloy Wheel
- » Central locking
- » Central Locking
- » Chain Driven Engine
- » Cruise Control
- » Driver airbag
- » Electric Mirrors (Retr...
- » Passenger airbag
- » Power steering

Body Style  
**Hatchback**

Odometer  
**149,102 km**

Engine  
**1339 cc**


Fuel Type  
**HYBRID**

Transmission  
**Automatic**

Wheels  
**14"**

VIN  
**7AT08G2YX24225610**

Interior  
**-**

Safety  
  
Based on 2025 UCSR rating for 08-14 models

Reg No.  
**QLC395**

Ext Colour  
**Black**

History  
**Ex-Overseas**

Seats  
**5 seats, Cloth**

CO2 Emissions  
**★★★★☆**  
**113 grams/km**

Energy Economy  
**★★★★☆☆**  
**Annual fuel cost of \$1,840**  
**4.7L per 100km**

Cost per year is an estimate based on petrol price of \$2.80 per litre and an average distance of 14000 km. Emissions and Energy Economy figures standardised to 3P WLTP.

**Stock ID: 7532**



Central Autos Ltd | Phone 09 215 7677 | Email centralautosltd@gmail.com  
45 Leonard Road, Penrose, Auckland 1060, New Zealand  
www.cas98.com