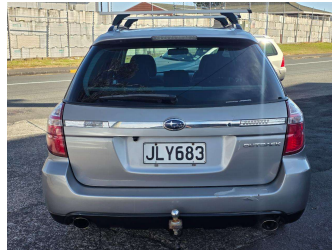
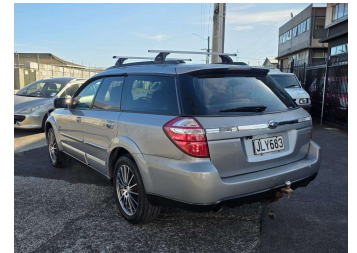



2008 Subaru LEGACY Outback AWD/Ready2Go




Purchase Price **\$6,490**
Includes GST, Registration & Licensing

Finance may be available on this vehicle. Ask one of our friendly staff for more information.



Gain peace of mind with Mechanical Breakdown Insurance. **Ask us how.**



Top features

- » 4 cylinder
- » ABS
- » Air Conditioning
- » Alloy Wheel
- » Central locking
- » Central Locking
- » Driver airbag
- » Electric Mirrors (Retr...
- » Passenger airbag
- » Power steering

Body Style
5 door, Station Wagon

Odometer
140,735 km

Engine
2459 cc

Fuel Type
Petrol

Transmission
Automatic

Wheels
17"

VIN
7AT0GF0BX15051433

Interior
-

Safety



Based on 2025 UCSR rating for 03-09 models

Reg No.
JLY683

Ext Colour
Grey

History
Ex-Overseas

Seats
5 seats, Cloth

CO2 Emissions
★ ★ ★ ☆ ☆ ☆
213 grams/km

Energy Economy
★ ☆ ☆ ☆ ☆ ☆

Annual fuel cost of \$3,490
8.9L per 100km

Cost per year is an estimate based on petrol price of \$2.80 per litre and an average distance of 14000 km. Emissions and Energy Economy figures standardised to 3P WLTP.

Stock ID: 7408



Central Autos Ltd | Phone 09 215 7677 | Email centralautosltd@gmail.com
45 Leonard Road, Penrose, Auckland 1060, New Zealand
www.cas98.com