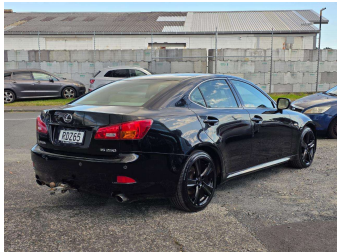
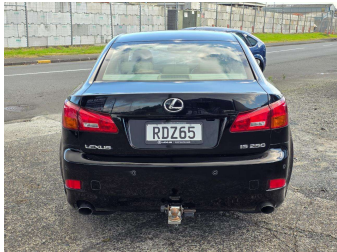


2008 Lexus Is250 2.5P LTD/NZ NEW/2 KEYS



Purchase Price

\$11,990

Includes GST, Registration & Licensing

Finance may be available on this vehicle. Ask one of our friendly staff for more information.



Gain peace of mind with Mechanical Breakdown Insurance. **Ask us how.**



Top features

- » 6 cylinder
- » ABS
- » Air Conditioning
- » All Power Windows
- » Alloy Wheel
- » Central locking
- » Central Locking
- » Chain Driven Engine
- » Driver airbag
- » Electric Mirrors (Retr...
- » Passenger airbag
- » Power steering
- » Towbar

Body Style

4 door, Sedan

Odometer

143,894 km

Engine

2500 cc

Fuel Type

Petrol

Transmission

Automatic, Rear Wheel

Wheels

18"

VIN

JTHBK262705063962

Interior

-

Safety



Based on 2024 UCSR rating for 05-13 models

Reg No.

RDZ65

Ext Colour

Black

History

NZ New

Seats

5 seats, Leather

CO2 Emissions

★ ★ ☆ ☆ ☆ ☆

243 grams/km

Energy Economy

★ ☆ ☆ ☆ ☆ ☆

**Annual fuel cost of \$3,960
10.1L per 100km**

Cost per year is an estimate based on petrol price of \$2.80 per litre and an average distance of 14000 km. Emissions and Energy Economy figures standardised to 3P WLTP.

Stock ID: 6915



Central Autos Ltd | Phone 09 215 7677 | Email centralautosltd@gmail.com
45 Leonard Road, Penrose, Auckland 1060, New Zealand
www.cas98.com