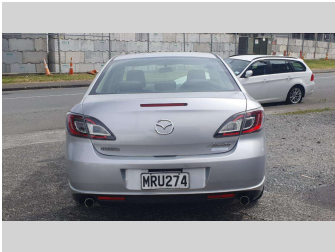


2008 Mazda ATENZA 2.0P/NEW TOUCH BLUETOOTH



Purchase Price

Includes GST, Registration & Licensing

\$5,490

Finance may be available on this vehicle. Ask one of our friendly staff for more information.



Gain peace of mind with Mechanical Breakdown Insurance. **Ask us how.**



Top features

- » 4 cylinder
- » ABS
- » ABS brakes
- » Air Conditioning
- » Alloy Wheel
- » Central locking
- » Central Locking
- » Chain Driven Engine
- » Driver airbag
- » Electric Mirrors
- » Passenger airbag
- » Power steering

Body Style

4 door, Sedan

Odometer

174,702 km

Engine

1990 cc

Fuel Type

Petrol

Transmission

Automatic, Front Wheel

Wheels

16"

VIN

7AT0C139X19100245

Interior

-

Safety



Based on 2024 UCSR rating for 08-11 models

Reg No.

MRU274

Ext Colour

-

History

Ex-Overseas

Seats

5 seats, Cloth

CO2 Emissions

★★★★☆☆

197 grams/km

Energy Economy

★★★★☆☆

**Annual fuel cost of \$3,210
8.2L per 100km**

Cost per year is an estimate based on petrol price of \$2.80 per litre and an average distance of 14000 km. Emissions and Energy Economy figures standardised to 3P WLTP.

Stock ID: 6641



Central Autos Ltd | Phone 09 215 7677 | Email centralautosltd@gmail.com
45 Leonard Road, Penrose, Auckland 1060, New Zealand
www.cas98.com